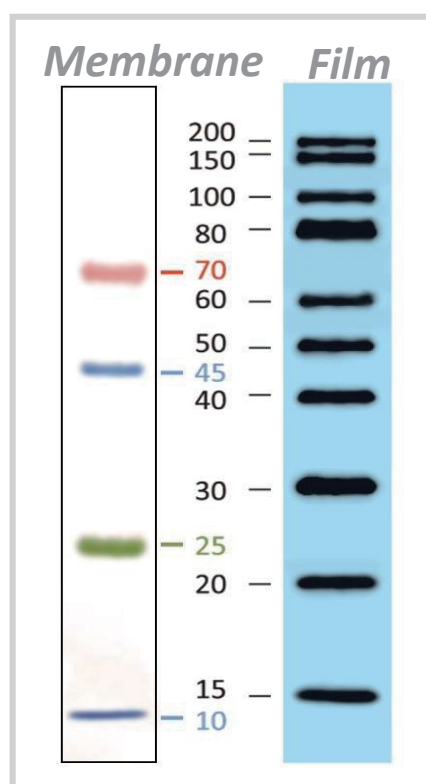


YesBlot™ Western Marker I

Powerful for Western Data Credibility



- ✓ **One tube, ready-to-use**
 - No need to mix or heat before sample loading
- ✓ **Wide Range**
 - 10 clear bands from 15 to 200 kDa
- ✓ **Pre-stained bands**
 - 4 pre-stained bands for monitoring protein separation on SDS-PAGE and transferring efficiency on membrane
- ✓ **Compatible with your original system**
 - No additional antibodies or instruments are required.
 - Detected by chemiluminescent, fluorescent, chromogenic or other methods

Nowadays, Western Marker is essential for Western Blots.

Nature asks their authors that molecular-weight markers shall be included in gels or blots.

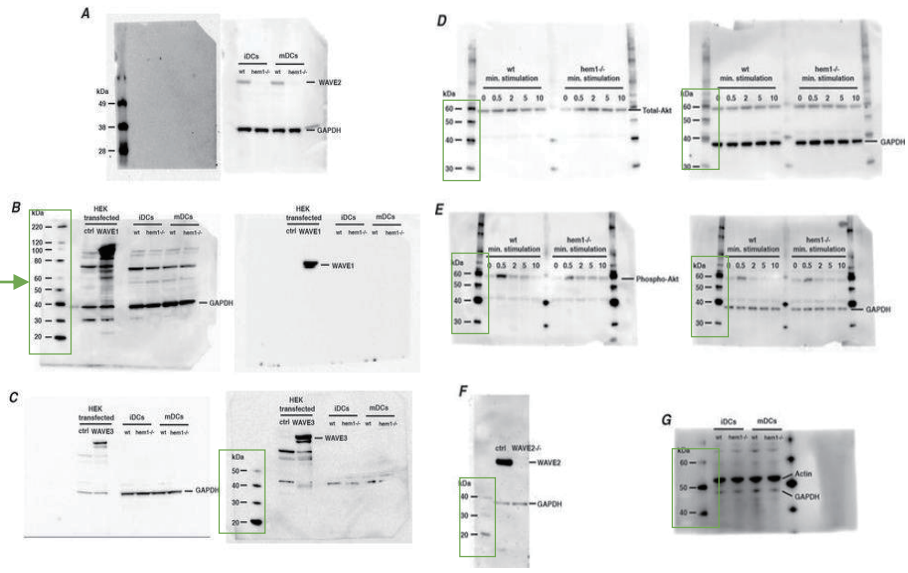
- A NEW DIMENSION OF DATA DISPLAY**
So what constitutes best practice in data display? Here are our recommendations:
- Display conservatively cropped versions of gels in the primary paper. A reasonable guide is to retain about five bandwidths of background above and below. Crop only when no essential information is at stake.
 - As far as possible, include essential controls and molecular-weight markers; either in the main figure or as Supplementary Information.
 - Avoid splicing different gels together. If unavoidable, clearly demark the point of splicing and avoid overextending quantitative interpretations across splices.
 - Display all of the key data involving cropped gels as a full and unedited version with appropriate labelling in Supplementary Information; please display all panels as a single figure and refer to this data in the relevant figure legends. As a minimum, provide uncropped data at the submission stage to facilitate peer review.

<https://doi.org/10.1038/ncb0404-275>



Example: Raw data of Western Blots
(Nature Cell Biology, volume 18, pages 1253–1259 (2016), Supplementary Figure 6)

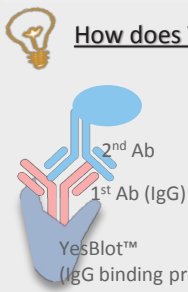
Western blotting signals are accompanied by Western Marker.



<https://doi.org/10.1038/ncb3426>

IgG-binding protein is the best choice for Western Marker

- **Reliable** – markers were detected along with targets.
- **Economical** – no additional antibodies, reagents or instruments are required.
- **Convenient** – no extra steps are required.
- **Compatible with any detection system**
- **Applicable for stripping and re-probing**

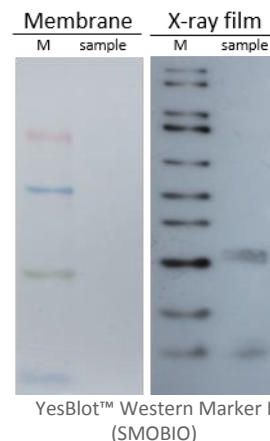


How does YesBlot™ Western Marker I work?

Secondary antibodies conjugated with reporter such as HRP, AP, Biotin, Alexa Fluor®, IRDye®

Primary antibodies (IgG) can specifically recognize target proteins and be bound to YesBlot™ Western Marker I.

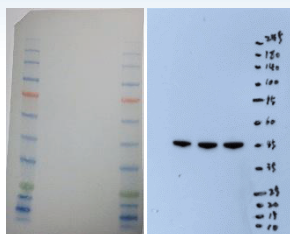
https://youtu.be/shU7xDkH_k



Other choices used to label molecular weight for Western blots

Indirect labeling on film

- Superimpose X-ray film to membrane.
- Label pre-stained protein marker on the film by marker pen.



ExcelBand™ 3-color High Range Pre-stained Protein Marker (SMOBIO)

Artificial labeling on the membrane

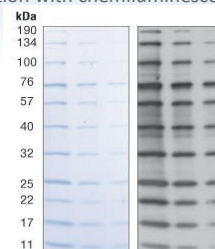
- Label pre-stained protein marker on the membrane by Western pen.
- Detection with chemiluminescent substrate



WesternSure® Pen (LI-COR)

Anti-Blue antibody (HRP conjugated)

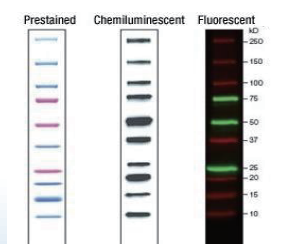
- Incubate the lane with the pre-stained protein marker with anti-blue antibody.
- Detection with chemiluminescent substrate



Anti-Blue (2D2F11) Mouse mAb (HRP) (Cell Signaling)

Strep-tagged recombinant proteins

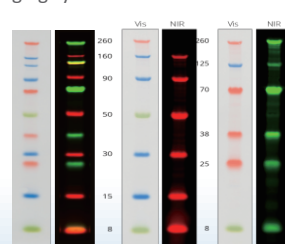
- Work with StrepTactin-HRP or AP during 2nd antibody incubation
- Detection depends on using StrepTactin-HRP or AP.



Precision Plus Protein™ WesternC™ Blotting Standards (BIORAD)

Fluorescent pre-stained marker

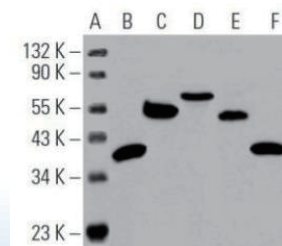
- Use together with appropriate NIR conjugated 2nd antibodies.
- Detection with near-infrared detection imaging systems



Chameleon Pre-stained Protein Ladder (LI-COR)

HRP-tagged recombinant proteins

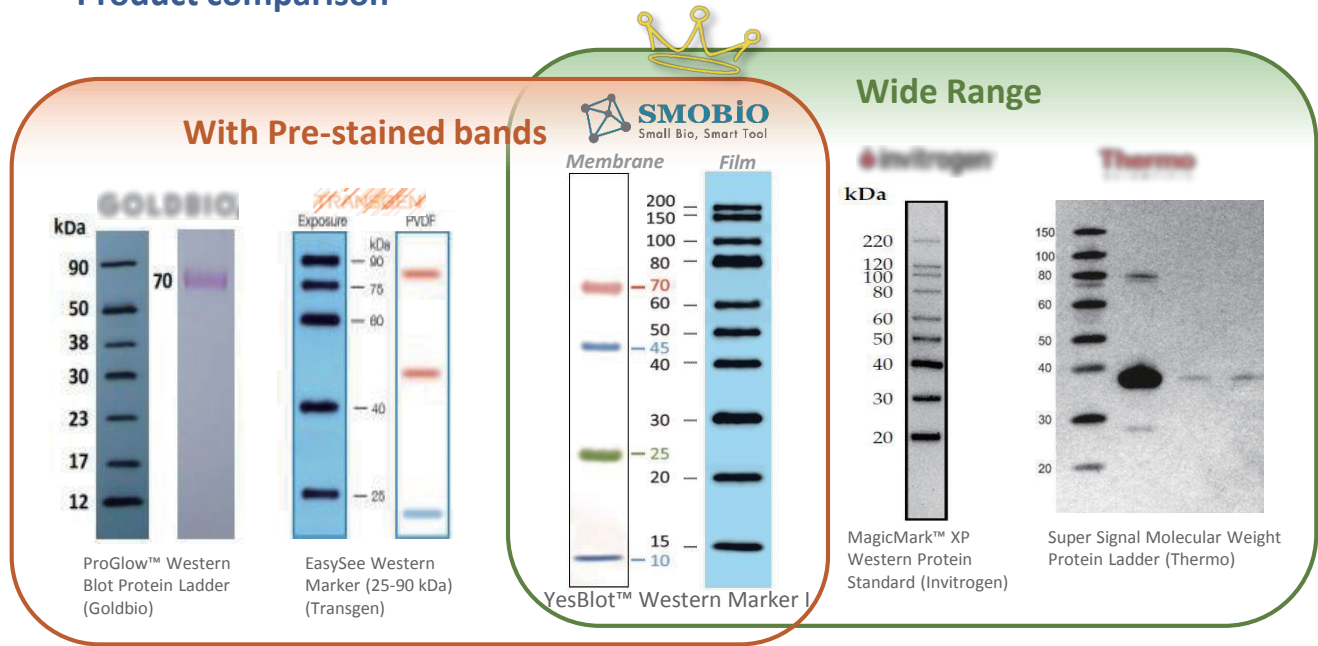
- Detection with chemiluminescent substrate
- Not recommended to strip and re-probe



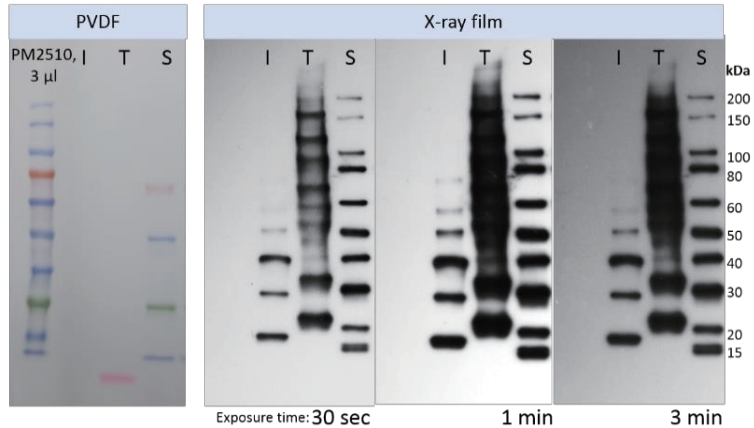
Cruz Marker™ MW Tag-HRP (SANTA CRUZ)

SMOBIO offers the BEST!

Product comparison



Brand	Name	Range	Official claimed bands	Pre-stained bands on SDS-PAGE or membrane	Actual results
Invitrogen	MagicMark™ XP Western Protein Standard	20 ~ 220 kDa	9	None	6 bands detected, high MW bands were missing
Thermo	Super Signal Molecular Weight Protein Ladder	20 ~ 150 kDa Narrow !	8	1 (tracking dye)	High MW bands were all smeared.
SMOBIO	YesBlot™ Western Marker I	15 ~ 200 kDa	10	4 (70, 45, 25, and 10 kDa)	10 sharp and clear bands



Ordering information

Cat. No.	Product Description
WM1000	YesBlot™ Western Marker I

For more information, please contact with us.
order@smobio.com
For more details, please check following link
<http://www.smobio.com/Product-PM-wm1000.html>