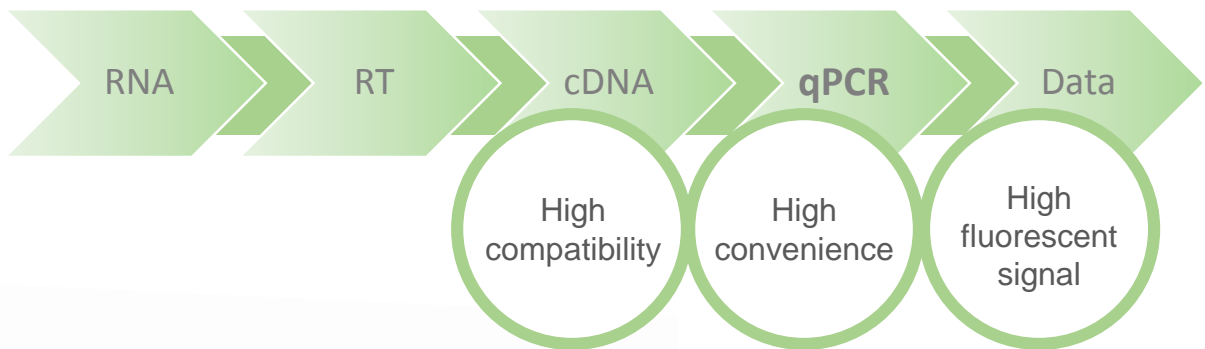


# ***ExcelTaq™***

## ***2X Fast Q-PCR Master Mix***

***(SYBR, no ROX)***

Cat. No. TQ1200

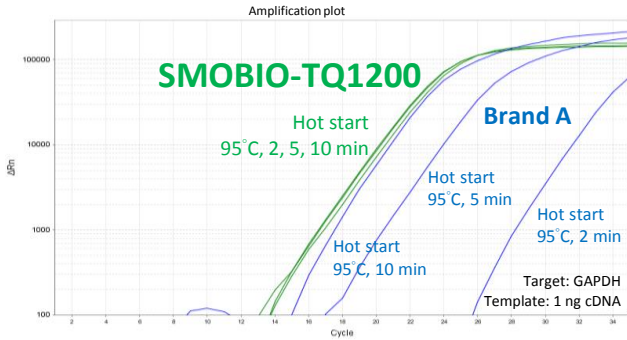


### ***Features***

- ✓ *Fast Hot Start*
- ✓ *High Sensitivity*
- ✓ *Low Background*
- ✓ *High Stability*
- ✓ *Suitable for Fast Program*
- ✓ *Smart Blue Contrast Dye*

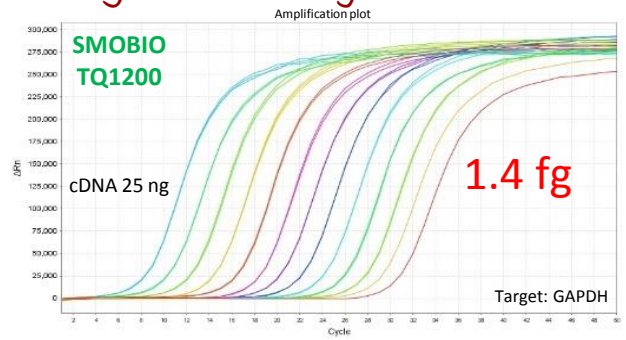
# ExcelTaq™ 2X Fast Q-PCR Master Mix (SYBR, no ROX)

## Fast Hot Start



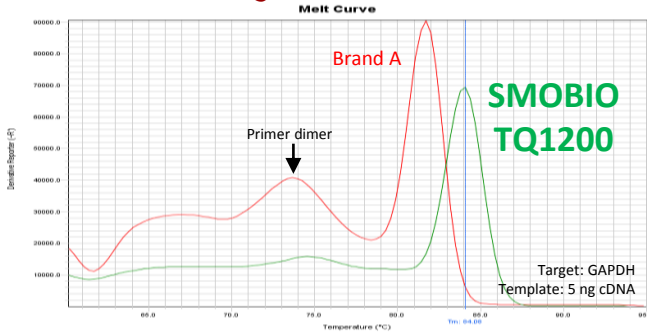
The overlapped amplification curves from different hot start duration display fast activation of TQ1200 ExcelTaq™ 2X Fast Q-PCR Master Mix (SYBR, no ROX). The initial activation step was set as 2, 5, and 10 minutes. TQ1200 ExcelTaq™ 2X Fast Q-PCR Master Mix (SYBR, no ROX) contains a special hot-start *Taq* polymerase that omits time-consuming initial activation step required by chemically modified hot start *Taq* polymerases (Brand A).

## High Sensitivity



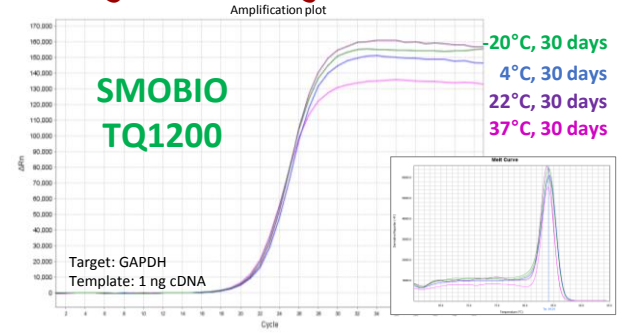
The amplification curves from different amounts of cDNA display high sensitivity of TQ1200 ExcelTaq™ 2X Fast Q-PCR Master Mix (SYBR, no ROX). The sensitivity assay of TQ1200 ExcelTaq™ 2X Fast Q-PCR Master Mix (SYBR, no ROX) was examined with serial diluted cDNA from 25 ng to 1.4 fg as templates. The equal intervals of amplification curves also displayed the high precision of TQ1200 in target quantification.

## Low Background



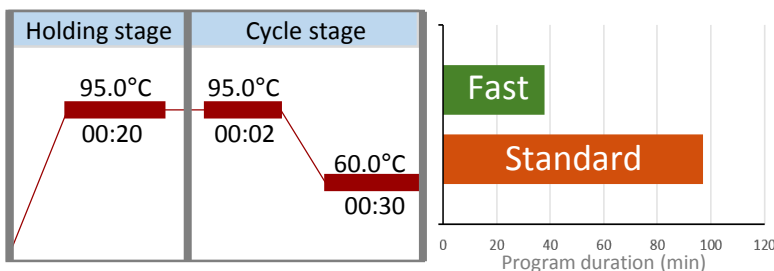
The single peak of melting curve displays high specificity of TQ1200 ExcelTaq™ 2X Fast Q-PCR Master Mix (SYBR, no ROX). The post-amplification melting-curve analysis was examined with 5 ng cDNA as template, abnormally high concentration of primers (400 nM), and TQ1200 ExcelTaq™ 2X Fast Q-PCR Master Mix (SYBR, no ROX) or qPCR master mix from brand A as reagents.

## High Stability



The overlapped amplification curves and melting curves from different storage conditions display high stability of TQ1200 ExcelTaq™ 2X Fast Q-PCR Master Mix (SYBR, no ROX). Stability was analyzed via real-time PCR amplification with 1 ng cDNA as template, and TQ1200 ExcelTaq™ 2X Fast Q-PCR Master Mix (SYBR, no ROX) stored at -20°C, 4°C, 22°C and 37°C for 30 days as reagents.

## Suitable for Fast Program



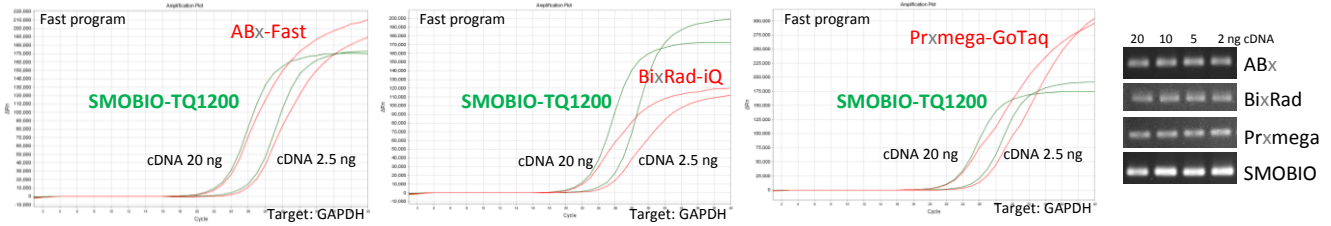
## Smart Blue Contrast Dye



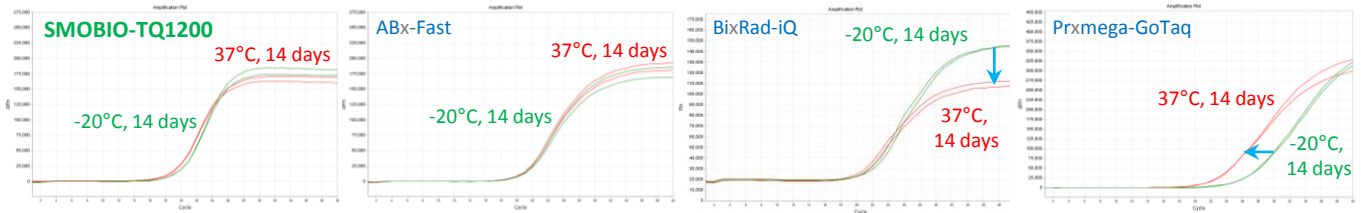
# ExcelTaq™ 2X Fast Q-PCR Master Mix (SYBR, no ROX)

## Competitor analysis

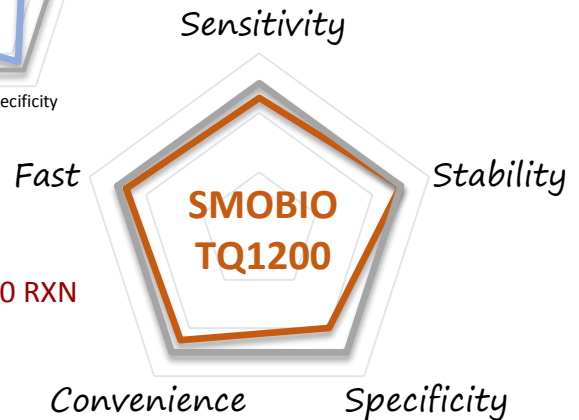
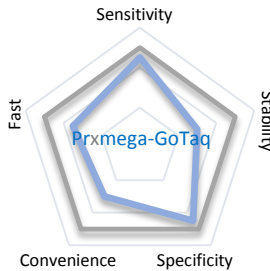
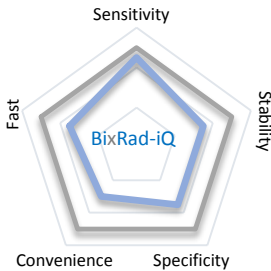
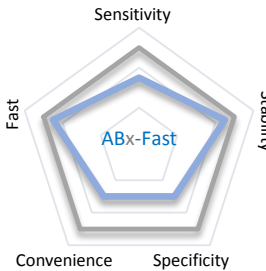
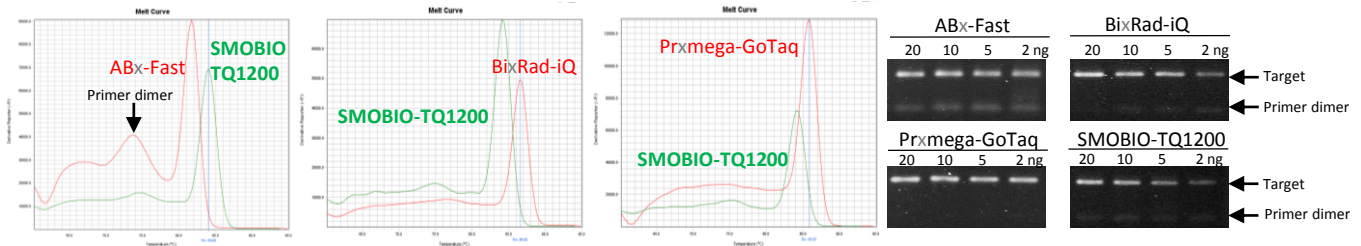
### Amplification efficiency using fast program



### Stability at 37°C for 14 days



### Amplification specificity



## Ordering information

ExcelTaq™ 2X Fast Q-PCR Master Mix (SYBR, no ROX), 200 RXN  
Cat. No. TQ1200

### Contents

Component	Volume
ExcelTaq™ 2X Fast Q-PCR Master Mix (SYBR, no ROX)	2 x 1 ml