



SMOBio

Small Bio, Smart Tool

www.smobio.com

Product Information

**YesBlot™ Western Marker I
(10- 200 kDa)**

WM1000

Size: 250 μ l

5 μ l per well for 50 applications

Storage

4°C for 3 months

-20°C for 24 months

Usage Recommendation

- **1.5~2.5 μ l** per well for two-step Western blot using 1st Ab followed with 2nd Ab conjugated with reporter enzymes.
- **2.5~5 μ l** per well for one-step Western blot using 1st Ab conjugated with reporter enzymes.
- Apply more for thicker (> 1.5 mm) or larger gel.

Description

YesBlot™ Western Marker I is a ready-to-use mixture with ten IgG-binding proteins covering a wide range of molecular weights from 15 to 200 kDa in Tris-Glycine buffer.

YesBlot™ Western Marker I performs dual functions. First, it contains 4 pre-stained proteins (10, 25, 45 and 70 kDa) for monitoring protein separation during SDS-PAGE, verification of Western transfer efficiency on membranes (nitrocellulose, PVDF, or nylon) and for approximating the protein size. Second, ten IgG-binding proteins can be immuno-detected on film or by CCD imaging.

YesBlot™ Western Marker I is compatible for chemiluminescent, fluorescent, chromogenic or other detection systems. In addition, YesBlot™ Western Marker I has two reference bands with enhanced intensity (at 30 kDa and 80 kDa).

The marker is supplied in gel loading buffer and is ready to use. **Do NOT heat, dilute, or add reducing agents before loading.**

Contents

The YesBlot™ Western Marker I contains recombinant IgG binding proteins, Glycerol, SDS, and tracking dyes in a Tris-HCl buffer.

Features

- **4 prestained proteins** for clear visualization during electrophoresis and Western blotting transfer
- **10 IgG-binding proteins** for visualization on Western blots
- Wide range size estimation (**10-200 kDa**)
- Two enhanced bands (**30 and 80 kDa**)

Guide for Molecular Weight Estimation

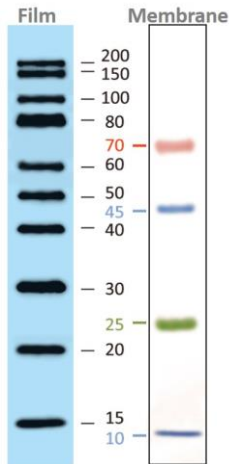
Migration patterns and approximate MWs (kDa) of prestained proteins of the YesBlot™ Western Marker I in different electrophoresis conditions are listed below:

Band	Color	TRIS-GLYCINE	BIS-TRIS (MOPS)	BIS-TRIS (MES)
1	Pink	70	61	62
2	Blue	45	41	42
3	Green	25	22	23
4	Blue	10	9	10



SMOBio
Small Bio, Smart Tool

YesBlot™ Western Marker I



Note. The apparent molecular weight (kDa) of each prestained protein has been determined by calibration against an unstained protein standard; supplemental data should be considered for more accurate adjustments in different electrophoresis conditions.

Quality Control

Under suggested conditions, the YesBlot™ Western Marker I resolves 4 prestained bands on the membrane and 10 bands after secondary antibodies binding followed by chemiluminescent detection.

Other information

SMOBIO Technology, Inc. claims all warranties with respect to this document, expressed or implied, including but not limited to those of merchantability or fitness for a particular purpose. In no event shall SMOBIO Technology, Inc. be liable, whether in contract, tort, warranty, or under any statute or any other basis for special, incidental, indirect, punitive, multiple or consequential damages in connection with or arising from this document, including but not limited to the use thereof.

Caution: Not intended for human or animal diagnostic or therapeutic uses.

Related Products

- PM1500 ExcelBand All Blue Regular Range Protein Marker, 250 μ l \times 2
- PM1600 ExcelBand All Blue Regular Range Plus Protein Marker, 250 μ l \times 2
- PM1700 ExcelBand All Blue Broad Range Protein Marker, 250 μ l \times 2
- PM2400 ExcelBand Pink Blue Protein Marker, 250 μ l \times 2
- PM2500 ExcelBand 3-color Regular Range Protein Marker, 250 μ l \times 2
- PM2510 ExcelBand Enhanced 3-color Regular Range Protein Marker, 250 μ l \times 2
- PM2600 ExcelBand 3-color High Range Protein Marker, 250 μ l \times 2
- PM2610 ExcelBand Enhanced 3-color High Range Protein Marker, 250 μ l \times 2
- PM2700 ExcelBand 3-color Broad Range Protein Marker, 250 μ l \times 2
- PM2800 ExcelBand 3-color Extra Range Protein Marker, 250 μ l \times 2
- PM5000 ExcelBand 3-color Pre-stained Protein Ladder, Regular Range, 250 μ l \times 2
- PM5100 ExcelBand 3-color Pre-stained Protein Ladder, High Range, 250 μ l \times 2

PM5200	ExcelBand 3-color Pre-stained Protein Ladder, Broad Range, 250 μ l \times 2
PS1000	FluoroStain Protein Fluorescent Staining Dye (Red, 1,000X), 1 ml
DM1160	FluoroBand 50 bp Fluorescent DNA Ladder, 500 μ l
DM2160	FluoroBand 100 bp Fluorescent DNA Ladder, 500 μ l
DM2360	FluoroBand 100 bp+3K Fluorescent DNA Ladder, 500 μ l
DM3160	FluoroBand 1 KB (0.25-10 kb) Fluorescent DNA Ladder, 500 μ l
DM3260	FluoroBand 1 KB Plus (0.1-10 kb) Fluorescent DNA Ladder, 500 μ l
DM4160	FluoroBand XL 25 kb Fluorescent DNA Ladder, Broad Range (up to 25 kb), 500 μ l
DL5000	FluoroDye DNA Fluorescent Loading Dye (Green, 6X), 1 ml
DS1000	FluoroStain DNA Fluorescent Staining Dye (Green, 10,000X), 500 μ l
NS1000	FluoroVue Nucleic Acid Gel Stain (10,000X), 500 μ l
VE0100	B-BOX Blue Light LED epi-illuminator, AC 100-240V, 50/60Hz