



**SMOBIO**<sup>®</sup>

Small Bio, Smart Tool

[www.smobio.com](http://www.smobio.com)

## Product Information

ProMetric™

### TriColor Low Range Protein Ladder, 2 to 40 kDa

#### PM6628

Size: 250  $\mu$ l

5  $\mu$ l per well for 50 applications

#### Storage

4°C for 3 months

-20°C for long term storage

#### Loading Volume

- 5  $\mu$ l per loading for clear visualization during electrophoresis on a 15-well or 10-well mini-gel.
- 2.5  $\mu$ l per well for general Western blotting transfer.
- Apply more for a thicker (> 1.5 mm) or larger gel.

## Description

The PM6628 ProMetric™ TriColor Low Range Protein Ladder, 2 to 40 kDa, is a ready to use three-color protein standard with 6 pre-stained proteins covering a range of molecular weights from 2 to 40 kDa. Proteins are covalently coupled with a blue chromophore except for two reference bands (one **green** and one **red** band at 10 kDa and 40 kDa respectively) when separated on SDS-PAGE. The PM6628 ProMetric™ TriColor Low Range Protein Ladder is designed for monitoring protein separation during SDS-PAGE electrophoresis, verification of Western transfer efficiency on membranes (PVDF or nitrocellulose) and for approximating the molecular weight of small proteins.

The marker is supplied in gel loading buffer and is ready to use. **Do NOT heat, dilute, or add reducing agents before loading.**

## Storage Buffer

20 mM Tris-phosphate (pH 7.5 at 25°C), 1% SDS, 6 M Urea, and 20% (v/v) DMSO.

## Migration Patterns of PM6628 TriColor Low Range Protein Ladder



### Note:

Migration patterns were determined using freshly prepared Tris-Tricine gels with a 37.5:1 acrylamide-to-bisacrylamide ratio (C=2.7%). The 37.5:1 ratio is the most commonly used formulation for preparing Tricine gels, providing reliable and consistent results.

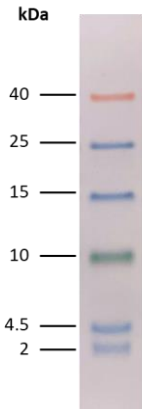
\* In typical Tris-Tricine gel electrophoresis, separate buffers are used for the cathode and anode.



**SMOBio**<sup>®</sup>  
Small Bio, Smart Tool

## ProMetric™ TriColor Low Range Protein Ladder

**PM6628**



**18% Tris-Tricine**



**Note.** The apparent molecular weight (kDa) of each protein has been determined by calibration against other protein standards; supplemental data should be considered for more accurate adjustments in different electrophoresis conditions.

## Important Information

1. For optimal results with the PM6628, we recommend using a 37.5:1 or 29:1 acrylamide-to-bisacrylamide ratio for Tris-Tricine gels. Avoid the 19:1 ratio due to its variability in formulation, potential use of hazardous chemicals, and longer electrophoresis times, particularly with 18% Tricine gels. Using Tris-Tricine gel with concentrations in the range of 14% to 16% is generally sufficient to achieve good separation of the PM6628.

2. To find usage tips and migration charts for other gel systems, please scan the QR code below:



## Quality Control

Under suggested conditions, PM6628 ProMetric™ TriColor Low Range Protein Ladder resolves 6 major bands in SDS-PAGE (Tris-tricine-SDS Buffer).

## **Other information**

SMOBIO Technology, Inc. claims all warranties with respect to this document, expressed or implied, including but not limited to those of merchantability or fitness for a particular purpose. In no event shall SMOBIO Technology, Inc. be liable, whether in contract, tort, warranty, or under any statute or any other basis for special, incidental, indirect, punitive, multiple or consequential damages in connection with or arising from this document, including but not limited to the use thereof.

Caution: Not intended for human or animal diagnostic or therapeutic uses.

## Related Products

|        |   |
|--------|---|
| PM1500 | ExcelBand All Blue Regular Range Protein Marker, 250 $\mu$ l $\times$ 2             |
| PM1600 | ExcelBand All Blue Regular Range Plus Protein Marker, 250 $\mu$ l $\times$ 2        |
| PM1700 | ExcelBand All Blue Broad Range Protein Marker, 250 $\mu$ l $\times$ 2               |
| PM2500 | ExcelBand 3-color Regular Range Protein Marker, 250 $\mu$ l $\times$ 2              |
| PM2510 | ExcelBand Enhanced 3-color Regular Range Protein Marker, 250 $\mu$ l $\times$ 2     |
| PM2600 | ExcelBand 3-color High Range Protein Marker, 250 $\mu$ l $\times$ 2                 |
| PM2700 | ExcelBand 3-color Broad Range Protein Marker, 250 $\mu$ l $\times$ 2                |
| PM2800 | ExcelBand 3-color Extra Range Protein Marker, 250 $\mu$ l $\times$ 2                |
| PM5000 | ExcelBand 3-color Pre-stained Protein Ladder, Regular Range, 250 $\mu$ l $\times$ 2 |
| PM5100 | ExcelBand 3-color Pre-stained Protein Ladder, High Range, 250 $\mu$ l $\times$ 2    |
| PM5200 | ExcelBand 3-color Pre-stained Protein Ladder, Broad Range, 250 $\mu$ l $\times$ 2   |
| WM1000 | YesBlot Western Marker I, 250 $\mu$ l   |

- QP2110 Q-PAGE™ Bis-Tris Precast Gel (Mini, 12 wells, 8%), 10 gels
- QP2310 Q-PAGE™ Bis-Tris Precast Gel (Mini, 12 wells, 12%), 10 gels
- QP2510 Q-PAGE™ Bis-Tris Precast Gel (Mini, 12 wells, 4-12%), 10 gels
- QP3110 Q-PAGE™ Bis-Tris Precast Gel (Midi, 12 wells, 8%), 10 gels
- QP3310 Q-PAGE™ Bis-Tris Precast Gel (Midi, 12 wells, 12%), 10 gels
- QP3510 Q-PAGE™ Bis-Tris Precast Gel (Midi, 12 wells, 4-12%), 10 gels
- QP4210 Q-PAGE™ TGN Precast Gel (Mini, 12 wells, 10%), 10 gels
- QP4510 Q-PAGE™ TGN Precast Gel (Mini, 12 wells, 4-15%), 10 gels
- QP5210 Q-PAGE™ TGN Precast Gel (Midi, 12 wells, 10%), 10 gels
- QP5510 Q-PAGE™ TGN Precast Gel (Midi, 12 wells, 4-15%), 10 gels

The latest version of the manual might be downloaded from [www.smobio.com/shop](http://www.smobio.com/shop).