



SMOBIO[®]

Small Bio, Smart Tool

www.smobio.com

Product Information

ExcelBand™ series

All Blue Regular Range Plus Protein Marker (9-180 kDa)

PM1600

Size: 250 μ l \times 2

5 μ l per well for 100 applications

Storage

4°C for 3 months

-20°C for long term storage

Loading Volume

- **3 μ l** or **5 μ l** per loading for clear visualization during electrophoresis on a 15-well or 10-well mini-gel.
- **1.5~2.5 μ l** per well for general Western blotting transfer.
- Apply more for a thicker (> 1.5 mm) or larger gel.

Description

The PM1600 ExcelBand™ All Blue Regular Range Plus Protein Marker is a blue protein standard with 11 pre-stained proteins covering a wide range of molecular weights from 10 to 180 kDa in Tris-Glycine buffer (9 to 170 kDa in Bis-Tris (MOPS) buffer and Bis-Tris (MES) buffer). Proteins are covalently coupled with a blue chromophore, and two reference bands (at 25 kDa and 72 kDa, respectively) are enhanced in intensity when separated on SDS-PAGE (Tris-Glycine buffer).

The PM1600 ExcelBand™ All Blue Regular Range Plus Protein Marker is designed for monitoring protein separation during SDS-polyacrylamide gel electrophoresis, verification of Western transfer efficiency on membranes (nitrocellulose, PVDF, or nylon) and for approximating the size of proteins.


The marker is supplied in gel loading buffer and is ready to use. **Do NOT heat, dilute, or add reducing agent before loading.**

Contents

Approximately 0.1~0.5 mg/ml of each protein in the buffer (20 mM Tris-phosphate (pH 7.5 at 25°C), 2% SDS, 0.2 mM Dithiothreitol, 3.6 M Urea, and 15% (v/v) Glycerol).

Guide for Molecular Weight Estimation

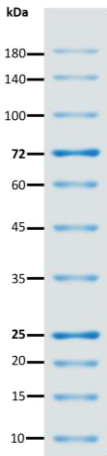
Migration patterns and approximate MWs (kDa) of PM1600 ExcelBand™ All Blue Regular Range Plus Protein Marker in different electrophoresis conditions are listed below:

Band	Color	TRIS-GLYCINE	BIS-TRIS (MOPS)	BIS-TRIS (MES)	
1	Blue	180	170	170	
2	Blue	140	130	130	
3	Blue	100	93	93	
4	Blue	72	68	70	
5	Blue	60	53	53	
6	Blue	45	41	42	
7	Blue	35	30	30	
8	Blue	25	22	23	
9	Blue	20	18	18	
10	Blue	15	14	14	
11	Blue	10	9	9	



SMOBio[®]
Small Bio, Smart Tool

ExcelBand™
All Blue Regular Range Plus Protein Marker
PM1600



Note. The apparent molecular weight (kDa) of each protein has been determined by calibration against an unstained protein standard; supplemental data should be considered for more accurate adjustments in different electrophoresis conditions.

Quality Control

Under suggested conditions, PM1600 ExcelBand™ All Blue Regular Range Plus Protein Marker resolves 11 major bands in SDS-PAGE (Tris-Glycine, MOPS, and MES buffer) and after Western blotting transfer to a nitrocellulose membrane.

Other information

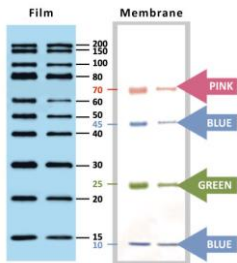
SMOBIO Technology, Inc. claims all warranties with respect to this document, expressed or implied, including but not limited to those of merchantability or fitness for a particular purpose. In no event shall SMOBIO Technology, Inc. be liable, whether in contract, tort, warranty, or under any statute or any other basis for special, incidental, indirect, punitive, multiple or consequential damages in connection with or arising from this document, including but not limited to the use thereof.

Caution: Not intended for human or animal diagnostic or therapeutic uses.

Related Products

PM1500	ExcelBand All Blue Regular Range Protein Marker, 250 μ l \times 2
PM1700	ExcelBand All Blue Broad Range Protein Marker, 250 μ l \times 2
PM2500	ExcelBand 3-color Regular Range Protein Marker, 250 μ l \times 2
PM2600	ExcelBand 3-color High Range Protein Marker, 250 μ l \times 2
PM2610	ExcelBand Enhanced 3-color High Range Protein Marker, 250 μ l \times 2
PM2700	ExcelBand 3-color Broad Range Protein Marker, 250 μ l \times 2
PM2800	ExcelBand 3-color Extra Range Protein Marker, 250 μ l \times 2
PM5000	ExcelBand 3-color Pre-stained Protein Ladder, Regular Range, 250 μ l \times 2
PM5100	ExcelBand 3-color Pre-stained Protein Ladder, High Range, 250 μ l \times 2
PM5200	ExcelBand 3-color Pre-stained Protein Ladder, Broad Range, 250 μ l \times 2
PS1000	FluoroStain Protein Fluorescent Staining Dye (Red, 1,000X), 1 ml
DM1100	ExcelBand 50 bp DNA Ladder, 500 μ l
DM2200	AccuBand 100 bp DNA Ladder II, 500 μ l

- DM3100 ExcelBand 1 KB (0.25-10 kb) DNA Ladder, 500 μ l
- DM5100 ExcelBand Super Range DNA Ladder, (50 bp- 25 kb), 500 μ l
- VE0100 B-BOX™ Blue Light LED epi-illuminator, AC 100-240V, 50/60Hz
- WM1000 YesBlot Western Marker I, 250 μ l



YesBlot™ Western Marker I

The latest version of the manual can be downloaded from www.smobio.com/shop.

For research use only
2023 ver. 2.3.0