



**SMOBio**<sup>®</sup>

Small Bio, Smart Tool

[www.smobio.com](http://www.smobio.com)

## Product Information

FluoroBand™ series

---

**XL 25 kb Fluorescent DNA Ladder,  
Broad Range (up to 25 kb),  
Ready to Use**

---

**DM4160      51.6 µg / 500 µl**

Size:            500 µl

5 µl per well for 100 gel applications

---

## Storage

### Protected from light

Room temperature for 6 months

4°C for 12 months

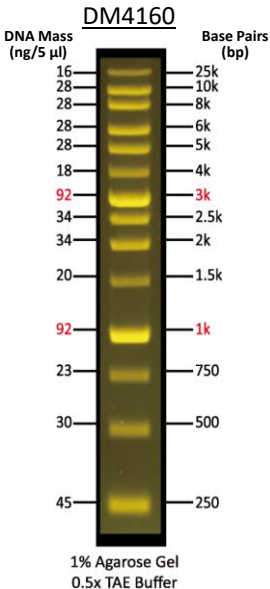
-20°C for 24 months

## **Description**

The DM4160 FluoroBand™ XL 25 kb Fluorescent DNA Ladder is a ready-to-use DNA ladder, which is pre-mixed with high sensitivity DNA binding fluorescent dye and loading dye for direct gel loading. The DNA Ladder DM4160 is composed of 14 individual DNA fragments: 25k, 10k, 8k, 6k, 5k, 4k, **3k**, 2.5k, 2k, 1.5k, **1k**, 750, 500, and 250 bp derived from a mixture of PCR products and specifically digested plasmid DNA. These bands can be visualized when illuminated with 470 nm blue or UV light. This product contains two enhanced bands (3 kb and 1 kb) for easy reference. In addition, two tracking dyes, Xylene cyanol FF and Bromophenol blue which mimic the migration of 4,000 bp and 500 bp dsDNA during electrophoresis are added for real time monitoring. Real time observation of electrophoresis is also possible if a compatible light source is fitted to the electrophoresis tank.

## **Buffering**

10 mM Tris-HCl (pH 8.0), 10 mM Na-EDTA, 0.005% Bromophenol blue, 0.005% Xylene cyanol FF and 10% Glycerol.

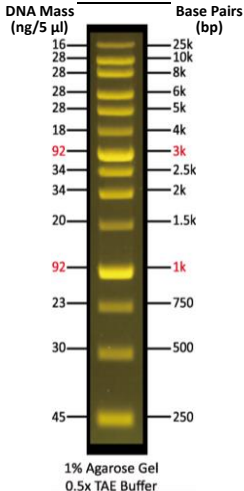


**Note:** This DNA Ladder was not designed for precise quantification of DNA mass, but can be used for approximating the mass of DNA by intensity comparison.



## FluoroBand™ XL 25 kb Fluorescent DNA Ladder, Broad Range (up to 25 kb)

### DM4160



The ladder is supplied with the gel loading buffer and is ready to use. Do not heat or dilute before loading.

## **Quality Control**

1. 14 defined bands are observed during electrophoresis in agarose gel.
2. No nuclease activity is detected by a direct nuclease activity assay.

## **Other information**

SMOBIO Technology, Inc. claims all warranties with respect to this document, expressed or implied, including but not limited to those of merchantability or fitness for a particular purpose. In no event shall SMOBIO Technology, Inc. be liable, whether in contract, tort, warranty, or under any statute or any other basis for special, incidental, indirect, punitive, multiple or consequential damages in connection with or arising from this document, including but not limited to the use thereof.

Caution: Not intended for human or animal diagnostic or therapeutic uses.

## Related Products

DM1160	FluoroBand 50 bp Fluorescent DNA Ladder, 500 $\mu$ l
DM2360	FluoroBand 100 bp+3K DNA Fluorescent DNA Ladder, 500 $\mu$ l
DM3160	FluoroBand 1 KB (0.25-10 kb) Fluorescent DNA Ladder, 500 $\mu$ l
DM3260	FluoroBand 1 KB Plus (0.1-10 kb) Fluorescent DNA Ladder, 500 $\mu$ l
DM4100	ExcelBand XL 25 kb DNA Ladder, Broad Range (up to 25 kb), 500 $\mu$ l
TP1260	ExcelTaq 5 $\times$ Fluorescent PCR Master Mix, 200 RXN
TF1000	SMO-HiFi DNA Polymerase, 100 U
PM2510	ExcelBand Enhanced 3-color Regular Range Protein Marker, 250 $\mu$ l $\times$ 2
DL5000	FluoroDye DNA Fluorescent Loading Dye (Green, 6X), 1 ml
DS1000	FluoroStain DNA Fluorescent Staining Dye (Green, 10,000X), 500 $\mu$ l
NS1000	FluoroVue Nucleic Acid Gel Stain (10,000X), 500 $\mu$ l
CK1000	Champion E. coli Transformation Kit
WM1000	YesBlot Western Marker I, 250 $\mu$ l
VE0100	B-BOX™ Blue Light LED epi-illuminator



## B-BOX™ Blue Light LED epi-illuminator

The latest version of the manual can be downloaded from [www.smobio.com/shop](http://www.smobio.com/shop).

For research use only  
2023 ver. 2.3.0