



SMOBio[®]

Small Bio, Smart Tool

www.smobio.com

Product information

FluoroBand™ series

100 bp+3K Fluorescent DNA Ladder, Ready to Use

DM2360 **56 µg / 500 µl**

Size: 500 µl

5 µl per well for 100 gel applications

Storage

Protected from light

Room temperature for 6 months

4°C for 12 months

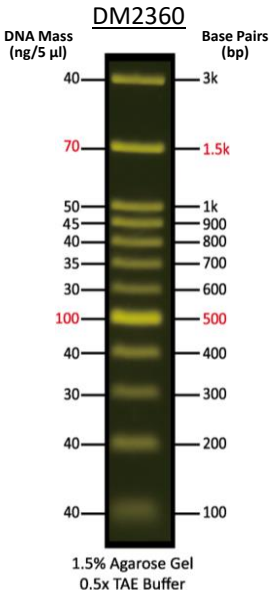
-20°C for 24 months

Description

The DM2360 FluoroBand™ 100bp+3K Fluorescent DNA Ladder is a ready-to-use DNA ladder, which is pre-mixed with high sensitivity DNA binding fluorescent dye and loading dye for direct gel loading. The DNA Ladder DM2360 is composed of 12 individual DNA fragments: 3k, **1.5k**, 1k, 900, 800, 700, 600, **500**, 400, 300, 200 and 100 bp derived from a mixture of PCR products and specifically digested plasmid DNA. These bands can be visualized when illuminated with 470 nm blue or UV light. This product contains two enhanced bands (1.5 kb and 500 bp) for easy reference. In addition, two tracking dyes, Xylene cyanol FF and Orange G which mimic the migration of 4,000 bp and 50 bp dsDNA during electrophoresis are added for real time monitoring. Real time observation of electrophoresis is also possible if a compatible light source is fitted to the electrophoresis tank.

Buffering

10 mM Tris-HCl (pH 8.0), 10 mM Na-EDTA,
0.025% Orange G, 0.005% Xylene cyanol FF
and 10% Glycerol.



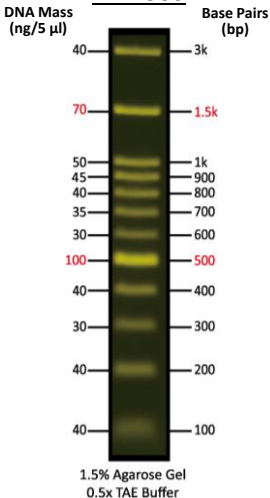
Note: This DNA Ladder was not designed for precise quantification of DNA mass, but can be used for approximating the mass of DNA by intensity comparison.



SMOBIO[®]
Small Bio, Smart Tool

FluoroBand™ 100 bp+3K Fluorescent DNA Ladder

DM2360



The ladder is supplied with the gel loading buffer and is ready to use. Do not heat or dilute before loading.

Quality Control

1. 12 defined bands are observed during electrophoresis in agarose gel.
2. No nuclease activity is detected by a direct nuclease activity assay.

Other information

SMOBIO Technology, Inc. claims all warranties with respect to this document, expressed or implied, including but not limited to those of merchantability or fitness for a particular purpose. In no event shall SMOBIO Technology, Inc. be liable, whether in contract, tort, warranty, or under any statute or any other basis for special, incidental, indirect, punitive, multiple or consequential damages in connection with or arising from this document, including but not limited to the use thereof.

Caution: Not intended for human or animal diagnostic or therapeutic uses.

Related Products

DM1160	FluoroBand 50 bp Fluorescent DNA Ladder, 500 μ l
DM2160	FluoroBand 100 bp Fluorescent DNA Ladder, 500 μ l
DM2300	ExcelBand 100 bp+3K DNA Ladder, 500 μ l
DM3160	FluoroBand 1 KB (0.25-10 kb) Fluorescent DNA Ladder, 500 μ l
DM4160	FluoroBand XL 25kb Fluorescent DNA Ladder, Broad Range (up to 25 kb), 500 μ l
TP1000	ExcelTaq DNA Polymerase, 500 U
TP1260	ExcelTaq 5 \times Fluorescent PCR Master Mix, 200 RXN
TF1000	SMO-HiFi DNA Polymerase, 100 U
PM2510	ExcelBand Enhanced 3-color Regular Range Protein Marker, 250 μ l \times 2
DL5000	FluoroDye DNA Fluorescent Loading Dye (Green, 6X), 1 ml
DS1000	FluoroStain DNA Fluorescent Staining Dye (Green, 10,000X), 500 μ l
NS1000	FluoroVue Nucleic Acid Gel Stain (10,000X), 500 μ l
CK1000	Champion E. coli Transformation Kit
WM1000	YesBlot Western Marker I, 250 μ l
VE0100	B-BOX™ Blue Light LED epi-illuminator



B-BOX™ Blue Light LED epi-illuminator

The latest version of the manual can be downloaded from www.smobio.com/shop.

For research use only
2023 ver. 2.3.0

P06-F11-A1