



**SMOBio**<sup>®</sup>

Small Bio, Smart Tool

[www.smobio.com](http://www.smobio.com)

## Product Information

AccuBand™ series

---

### AccuBand™ 100 bp DNA Ladder II, Ready to Use

---

**DM2200**      **50 µg / 500 µl**

Size:            500 µl

5 µl per well for 100 gel applications

---

### Storage

Room temperature for 6 months

4°C for 12 months

-20°C for 36 months

### Features:

1. Stable at room temperature for 6 months
2. It is suitable for agarose and polyacrylamide gel.

## **Description**

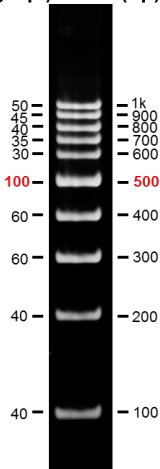
AccuBand™ 100 bp DNA Ladder II is composed of 10 individual DNA fragments, presenting 1k, 900, 800, 700 600, **500**, 400, 300, 200 and 100 bp sharp bands respectively. This product contains 1 enhanced band (500 bp) for easy identification of bands. AccuBand™ 100 bp DNA Ladder II is ready-to-use, containing loading buffer with dual color tracking dyes (orange G and Xylene cyanol FF). AccuBand™ 100 bp DNA Ladder II provides a sufficient amount of DNA for clear observation of all DNA bands ranging from 100 bp to 1 kb, either in agarose gel or in polyacrylamide gel electrophoresis.

## **Buffering**

10 mM Tris-HCl (pH 8.0), 10 mM Na-EDTA, 0.025% Orange G, 0.005% Xylene cyanol FF and 10% Glycerol.

**DM2200**

DNA Mass (ng/5 $\mu$ l)	Base Pairs (bp)
----------------------------	--------------------



**8% polyacrylamide  
1X TBE**

**Note:** This DNA Ladder was not designed for precise quantification of DNA mass, but can be used for approximating the mass of DNA by intensity comparison.

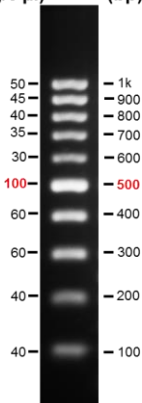


**SMOBio**<sup>®</sup>  
Small Bio, Smart Tool

## AccuBand™ 100 bp DNA ladder II

**DM2200**

**DNA Mass (ng/5  $\mu$ l)**      **Base Pairs (bp)**



**2% agarose gel**  
**0.5X TAE**



The ladder is supplied with the gel loading buffer and is ready to use. Do not heat or dilute before loading.

## **Quality Control**

1. 10 defined bands are observed during electrophoresis in agarose gel.
2. No nuclease activity is detected by a direct nuclease activity assay.

## **Other information**

SMOBIO Technology, Inc. claims all warranties with respect to this document, expressed or implied, including but not limited to those of merchantability or fitness for a particular purpose. In no event shall SMOBIO Technology, Inc. be liable, whether in contract, tort, warranty, or under any statute or any other basis for special, incidental, indirect, punitive, multiple or consequential damages in connection with or arising from this document, including but not limited to the use thereof.

Caution: Not intended for human or animal diagnostic or therapeutic uses.

## Related Products

DM2000	AccuBand 100 bp DNA Marker II, 500 $\mu$ l
DM2300	ExcelBand 100 bp+3K DNA Ladder, 500 $\mu$ l
DM2400	AccuBand 100 bp+3K DNA Ladder II, 500 $\mu$ l
DM3100	ExcelBand 1 KB (0.25-10 kb) DNA Ladder, 500 $\mu$ l
DM4100	ExcelBand XL 25 kb DNA Ladder, Broad Range (up to 25 kb), 500 $\mu$ l
PM2610	ExcelBand Enhanced 3-color High Range Protein Marker, 250 $\mu$ l $\times$ 2
PM2800	ExcelBand 3-color Extra Range Protein Marker, 250 $\mu$ l $\times$ 2
WM1000	YesBlot Western Marker I, 250 $\mu$ l
TP1200	ExcelTaq 5 $\times$ PCR Master Dye Mix, 200 RXN
TF1000	SMO-HiFi DNA Polymerase, 100 U
RP1000	ExcelRT Reverse Transcriptase, 20,000 U
DL5000	FluoroDye DNA Fluorescent Loading Dye (Green, 6X), 1 ml
DS1000	FluoroStain DNA Fluorescent Staining Dye (Green, 10,000X), 500 $\mu$ l
NS1000	FluoroVue Nucleic Acid Gel Stain (10,000X), 500 $\mu$ l
CV1100	GetClone PCR Cloning Vector II, 20 RXN
CK1000	Champion E. coli Transformation Kit
VE0100	B-BOX™ Blue Light LED epi-illuminator



## B-BOX™ Blue Light LED epi-illuminator

The latest version of the manual can be downloaded from [www.smobio.com/shop](http://www.smobio.com/shop).

For research use only  
2023 ver. 2.3.0