



**SMOBIO**<sup>®</sup>

Small Bio, Smart Tool

[www.smobio.com](http://www.smobio.com)

## Product Information

ExcelDye™ Series

---

### ExcelDye™ 6X DNA Loading Dye, Tri-color

---

**DL4000**      **5 ml × 2 (Tri-color, 6X)**

---

## Storage

4°C for 12 months

-20°C for 36 months

## Working Reagent Preparation

1:6 dilution per DNA electrophoresis sample.

(1 µl loading dye for every 5 µl DNA sample)

For research use only

2026 ver. 2.4.0

P06-F11-A1

## Description

SMOBIO's ExcelDye™ 6X DNA Loading dye (Tri-Color) is a pre-mixed buffer for tracking DNA samples during electrophoresis on agarose or polyacrylamide gels. It contains three dyes (Xylene cyanol FF, Bromophenol blue and Orange G) which help with the tracking of DNA migration. The Xylene cyanol FF, Bromophenol blue and Orange G migrate at approximately 800 bp, 150 bp and 30 bp on a standard 2% TAE agarose gel (4,000, 500 bp and 50 bp on 1% TAE agarose gel). The included glycerol helps keep the DNA at the bottom of the well, and the presence of EDTA chelates any divalent metal ions to prevent the process of a metal-dependent nuclease.

## Composition

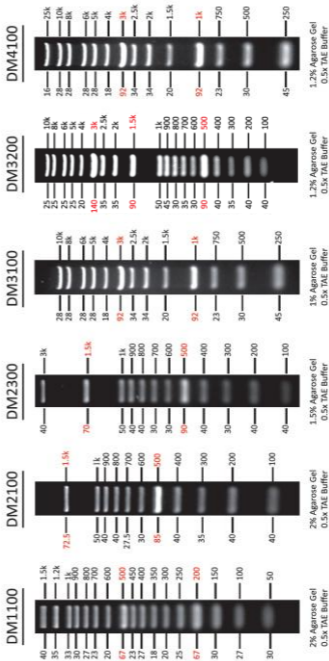
0.03% Xylene cyanol FF  
0.03% Bromophenol blue  
0.15% Orange G  
10 mM Tris-HCl (pH 8.0)  
60% glycerol  
60 mM EDTA



The latest version of the manual can be downloaded from [www.smobio.com/shop](http://www.smobio.com/shop).

## ExcelBand DNA Ladders

DNA Mass (ng/ 5 $\mu$ l) / Base Pairs (bp)





## Fluoroband DNA Ladders

