



**SMOBio**<sup>®</sup>

Small Bio, Smart Tool

[www.smobio.com](http://www.smobio.com)

## Product Information

ExcelDye™ Series

---

### ExcelDye™ 6X DNA Loading Dye, Green

---

**DL2000**      5 ml × 2 (Green, 6X)

---

## Storage

4°C for 12 months

-20°C for 36 months

## Working Reagent Preparation

1:6 dilution per DNA electrophoresis sample.

(1µl loading dye for every 5 µl DNA sample)

For research use only

2023 ver. 2.3.0

P06-F11-A1

## Description

SMOBIO's ExcelDye™ 6X DNA Loading dye (Green) is a pre-mixed buffer for tracking DNA samples during electrophoresis on agarose or polyacrylamide gels. It contains **Xylene cyanol FF** and **Orange G** dyes which help with the tracking of DNA migration. The **Xylene cyanol FF** and **Orange G** migrate at approximately 800 bp and 30 bp on a standard 2% TAE agarose gel (4,000 and 50 bp on 1% TAE agarose gel). The included glycerol helps keep the DNA at the bottom of the well, and the presence of EDTA chelates any divalent metal ions to prevent the process of a metal-dependent nuclease.

## Composition

0.03% Xylene cyanol FF  
0.15% Orange G  
10 mM Tris-HCl (pH 8.0)  
60% glycerol  
60 mM EDTA



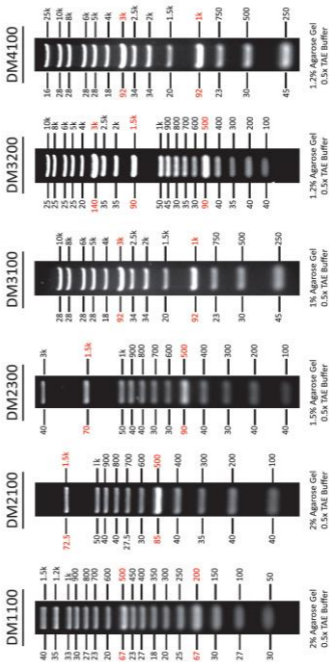
The latest version of the

manual can be downloaded from  
[www.smobio.com/shop](http://www.smobio.com/shop).



## ExcelBand DNA Ladders

DNA Mass (ng/ 5 $\mu$ l) / Base Pairs (bp)





## FluoroBand DNA Ladders

