



SMOBIO[®]

Small Bio, Smart Tool

www.smobio.com

Product Information

ExcelDye™ Series

ExcelDye™ 6X DNA Loading Dye, Orange

DL1000 5 ml × 2 (Orange, 6X)

Storage

4°C for 12 months

-20°C for 36 months

Working Reagent Preparation

1:6 dilution per DNA electrophoresis sample.

(1 µl loading dye for every 5 µl DNA sample)

For research use only

2023 ver. 2.3.0

P06-F11-A1

Description

SMOBIO's ExcelDye™ 6X DNA Loading dye (Orange) is a pre-mixed buffer for tracking DNA samples during electrophoresis on agarose or polyacrylamide gels. It contains **Orange G** which helps with the tracking of DNA migration. The **Orange G** migrates at approximately 30 bp on a standard 2% TAE agarose gel (50 bp on 1% TAE agarose gel). The included glycerol helps keep DNA at the bottom of the well, and the presence of EDTA chelates any divalent metal ions to prevent the process of a metal-dependent nuclease.

Composition

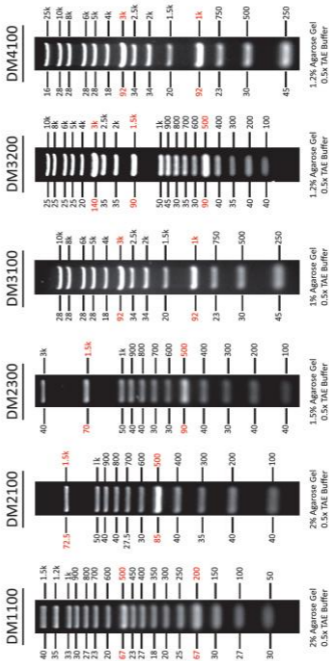
0.15% Orange G
10 mM Tris-HCl (pH 8.0)
60% glycerol
60 mM EDTA



The latest version of the manual can be downloaded from www.smobio.com/shop.

ExcelBand DNA Ladders

DNA Mass (ng/ 5µl) / Base Pairs (bp)





FluoroBand DNA Ladders

