



SMOBIO

Small Bio, Smart Tool

www.smobio.com

Product Information

ExcelBand™ series

1 KB Plus (0.1-10 kb) DNA Ladder, Ready to Use

DM3200 **87 µg / 500 µl**

Size: 500 µl

5 µl per well for 100 gel applications

Storage

Room temperature for 6 months

4°C for 12 months

-20°C for 36 months

Description

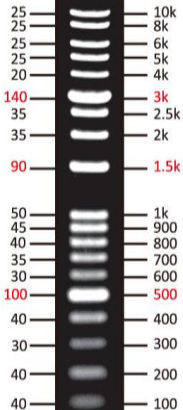
The DM3200 ExcelBand™ 1 KB Plus (0.1-10 kb) DNA Ladder is a ready-to-use DNA ladder, which is pre-mixed with loading dye for direct gel loading. The DNA Ladder DM3200 is composed of 19 individual DNA fragments: 10k, 8k, 6k, 5k, 4k, **3k**, 2.5k, 2k, **1.5k**, 1k, 900, 800, 700, 600, **500**, 400, 300, 200, and 100 bp derived from a mixture of PCR products and specifically digested plasmid DNA. This product contains three enhanced bands (3 kb, 1.5 kb and 500 bp) for easy reference. In addition, three tracking dyes, Xylene cyanol FF, Bromophenol blue and Orange G which mimic the migration of 4,000 bp, 500 bp and 50 bp dsDNA during electrophoresis are added for real time monitoring.

Buffering

10 mM Tris-HCl (pH 8.0), 10 mM Na-EDTA, 0.025% Orange G, 0.005% Bromophenol blue, 0.005%, Xylene cyanol FF and 10% Glycerol.

DM3200

DNA Mass (ng/5 μ l) Base Pairs (bp)



1.2% Agarose Gel

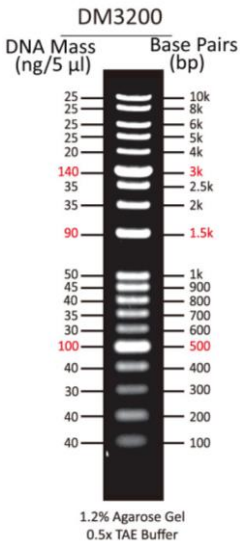
0.5x TAE Buffer

Note: This DNA Ladder was not designed for precise quantification of DNA mass, but can be used for approximating the mass of DNA by intensity comparison.



SMOBIO
Small Bio, Smart Tool

ExcelBand™ 1 KB Plus (0.1-10 kb) DNA Ladder



The ladder is supplied with the gel loading buffer and is ready to use. Do not heat or dilute before loading.

Quality Control

1. 19 defined bands are observed during electrophoresis in agarose gel.
2. No nuclease activity is detected by a direct nuclease activity assay.

Other information

SMOBIO Technology, Inc. claims all warranties with respect to this document, expressed or implied, including but not limited to those of merchantability or fitness for a particular purpose. In no event shall SMOBIO Technology, Inc. be liable, whether in contract, tort, warranty, or under any statute or any other basis for special, incidental, indirect, punitive, multiple or consequential damages in connection with or arising from this document, including but not limited to the use thereof.

Caution: Not intended for human or animal diagnostic or therapeutic uses.

Related Products

CK1000	Champion E. coli Transformation Kit
DM1100	ExcelBand 50 bp DNA Ladder, 500 μ l
DM2300	ExcelBand 100 bp+3K DNA Ladder, 500 μ l
DM3100	ExcelBand 1 KB (0.25-10 kb) DNA Ladder, 500 μ l
DM4100	ExcelBand XL 25 kb DNA Ladder, Broad Range (up to 25 kb), 500 μ l
DL2000	ExcelDye DNA Loading Dye, Green, 5 ml \times 2
DL4000	ExcelDye DNA Loading Dye, Tri-color, 5 ml \times 2
DL5000	FluoroDye DNA Fluorescent Loading Dye (Green, 6X), 1 ml
DS1000	FluoroStain DNA Fluorescent Staining Dye (Green, 10,000X), 500 μ l
NS1000	FluoroVue Nucleic Acid Gel Stain (10,000X), 500 μ l
PM2610	ExcelBand Enhanced 3-color High Range Protein Marker, 250 μ l \times 2
PM2800	ExcelBand 3-color Extra Range Protein Marker, 250 μ l \times 2
TP1200	ExcelTaq 5 \times PCR Master Dye Mix, 200 RXN
TF1000	SMO-HiFi DNA Polymerase, 100 U
RP1000	ExcelRT Reverse Transcriptase, 20,000 U
WM1000	YesBlot Western Marker I, 250 μ l
VE0100	B-BOX Blue Light LED epi-illuminator



B-BOX™ Blue Light LED epi-illuminator

For research use only
2019 ver. 2.1.1

P06-F11-A1